

# GiveDirectly

**Lessons from The  
Field: Threat  
Modeling for the  
Everyday Use of  
Digital Currency**

2022



# Why are we here at Devcon?

---

**GiveDirectly**

# GiveDirectly sends cash to those living in poverty with no strings attached

We're one of the **fastest-growing NGOs** focused on international issues

We're backed by **institutions, governments, corporates, and individuals** working to end poverty

**1.2M+** Recipients reached to date

**\$800M** Funds raised for recipients

**11** Countries in which we've operated

**15** Randomized controlled trials completed or ongoing



# Our approach

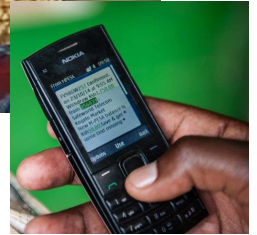
---

**GiveDirectly**

# Daily Life in Extreme Poverty

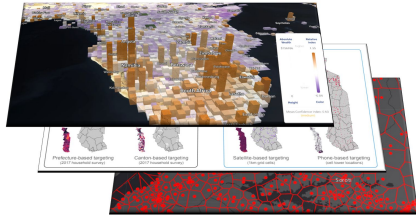


**Liz Auma**  
**Kibera, Kenya**



# We leverage technology to target, enroll, pay, and monitor cash delivery

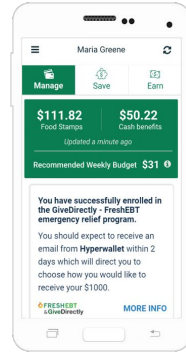
## Target



### Targeting models:

- Machine learning algorithms
- Government and CBO databases
- In-person field censuses
- Telco data

## Enroll



### Digital enrollment tools:

- Smartphone applications for in-person operations
- Self-enrollment websites
- SMS surveys

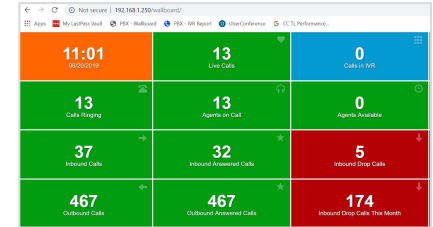
## Transfer



### Payments system:

- Integrated with local mobile money providers
- Fully digital payments processes and trail of all transactions

## Monitor



### Monitoring methods:

- Inbounds to GD hotline, managed by call center
- Digital follow-up surveys
- Ops and data team dashboards to flag areas for improvement

# Fraud Prevention

---

**GiveDirectly**

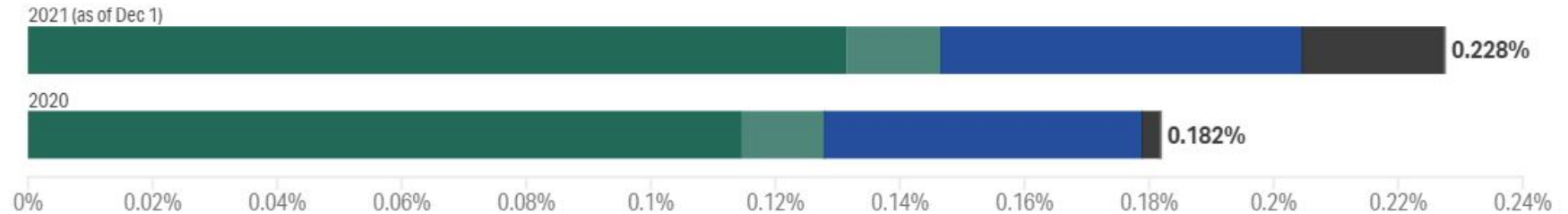
# \$241,633 was lost to fraud in 2021 — that's about what we expect

From \$106.3M transferred to 431K people in poverty we estimate 0.23% of those funds were lost to theft, bribes, and imposters

## Loss as percent of total money transferred, past 2 yrs

GiveDirectly

■ Theft (Unrecovered) ■ Theft (Recovered) ■ Imposters (Unrecovered) ■ Bribes (Unrecovered) ■ Bribes (Recovered)



Totals are for money transferred for Africa-based programs



## GD has robust measures to reduce fraud

- Our **standard approach** includes many steps designed to protect recipients including **training, hotline, and follow ups**
- Our **Recipient Advocacy** team investigates fraud with **firewalled** and **local** employees
- We perform risk assessments and increase **precautionary measures** in higher risk settings
  - **Randomizing** when and where to send staff
  - **Concealing** participation by registering recipients in private
  - **Staggering** payments across different days; avoiding group cash-out events

# Poverty Alleviation and Web3

---

GiveDirectly

# Web3 Cash Flow Through GD

- Funds In
  - GD has accepted direct crypto donations since 2014
  - Raised ~50M in direct crypto donations, nearly 5% of our total revenue
- Funds Out
  - Feasibility of world's poor using blockchain greatly enhanced by (A) Interfaces for feature phones (B) stablecoins
  - GD is evaluating the potential benefits of paying recipients directly in Web3 wallets:

<b>Centralized</b>	<b>Decentralized</b>
Opaque Transactions	Fully Transparent
Localized to Each Telco	Global
Limiting Terms of Service	Censorship Resistant

# Privacy Threats for Everyday Use

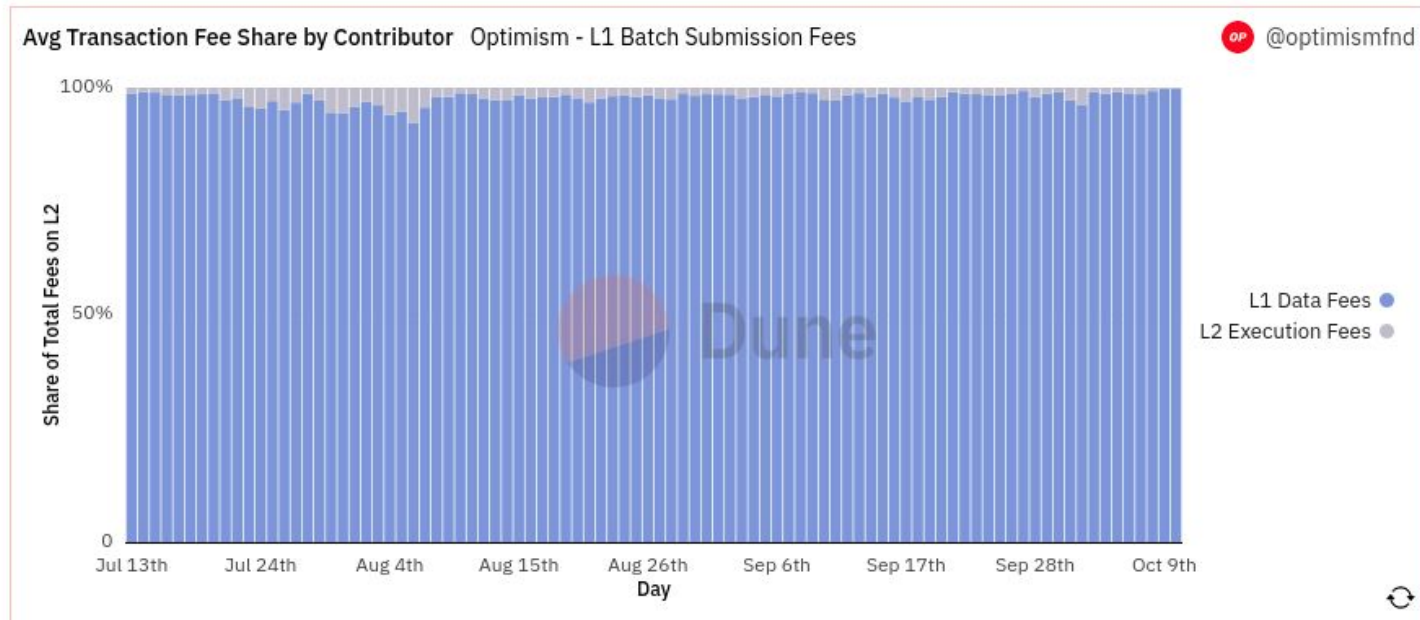
- What privacy threats exist under a model with a public ledger?
  - De-anonymization should be assumed
  - Theft
  - Bribery
  - Phishing
  - Scams
  - Social Pressure
- Mitigations
  - Balance and Transaction Privacy
  - Enabled by default to protect the most vulnerable
  - Fees need to remain low to drive usage (extreme poverty is \$2.15/day)

# Privacy and Government

- Censorship resistance as a feature, not a strategy
  - Bad: “The Permissionless Route” does not work in hybrid settings
  - Good: Refugee resettlement
- Assuming a cryptographically private financial system, Selective Disclosure is required
  - Democratic processes arrive at Legal Recourse, Regulations, Taxation
  - Data Minimization maximizes privacy
    - Good: View Keys
    - Better: ZK Proofs

# Takeaways

- Ethereum is for every person
- Each person exists in their own ecosystem, including in real life
- Today's EIP is tomorrow's family tree (e.g. EIP 4844)



# Thank you!

Support EIP-4844 and The Surge

Reach out if you need an poverty alleviation, UBI or humanitarian aid implementation partner.

[andrew.vaziri@givedirectly.org](mailto:andrew.vaziri@givedirectly.org)



Donate to GiveDirectly at [these addresses](#)